

Tower Health Partners®

Driving Physician Engagement Through Clinical Integration

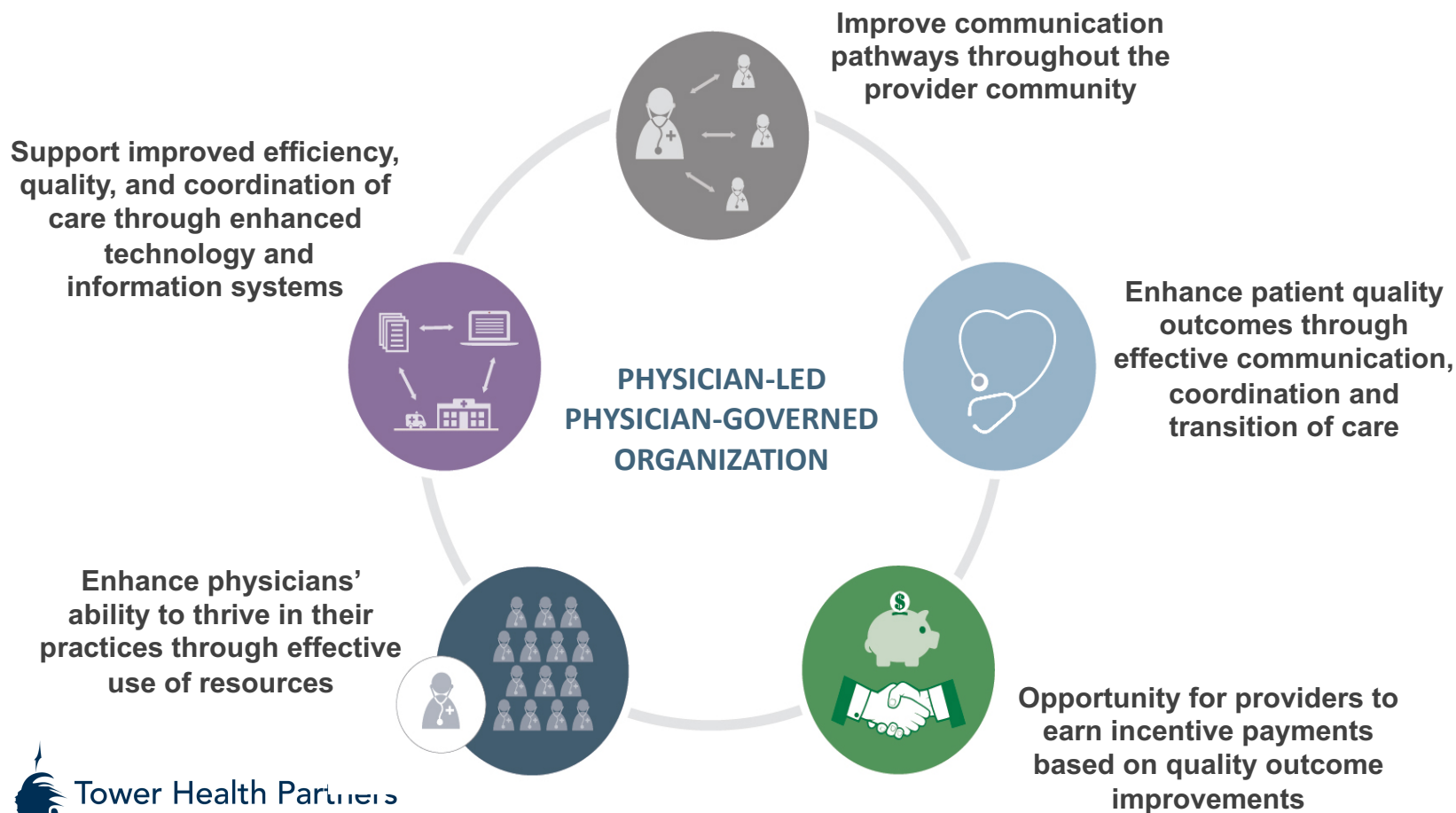
George A. Jenckes, III MD MS FACP

May 2, 2019



Tower Health Partners:

Physicians Leading Through Clinical Integration Pathways



Tower Health Partners

Advancing Health. Transforming Lives.

Tower Health Partners (THP)...

A Brief History

- Incorporated in 2012
- Started locally in Berks County to align employed and independent physicians in a cohesive network
- Non-Exclusive Membership for Physicians
- Employed and Independents, including PCPs and Specialists
- Initial network completed by end of 2013



Network Build

- ~700 Physicians
- 49 Specialties
- 100 Practices
- 1 Hospital
- 12 Physician-Owned Ambulatory Facilities
- 13-Member Board of Managers, including 10 Physician Managers
- 5 Founding Physician-Led Committees

Tower Health Partners (THP)...

Today

- Geographic expansion for continued alignment of employed and independent physicians in a cohesive network
- Hospital and Facilities Expansion
- Employed and Independents, including PCPs and Specialists
- Development of Preferred Partnerships
- Expanding Physician-Led Committees for regional and local oversight of CI Program
- MSO Services



Current Network

- Over 2400 Physicians
- 52 Specialties
- 300 Practices
- 6 Hospitals
- 14 Physician-Owned Ambulatory Facilities
- 17-Member Board of Managers, including 12 Physician Managers
- 5 Founding Physician-Led Committees and CIN Steering Committees (in development)

Physician Membership Growth

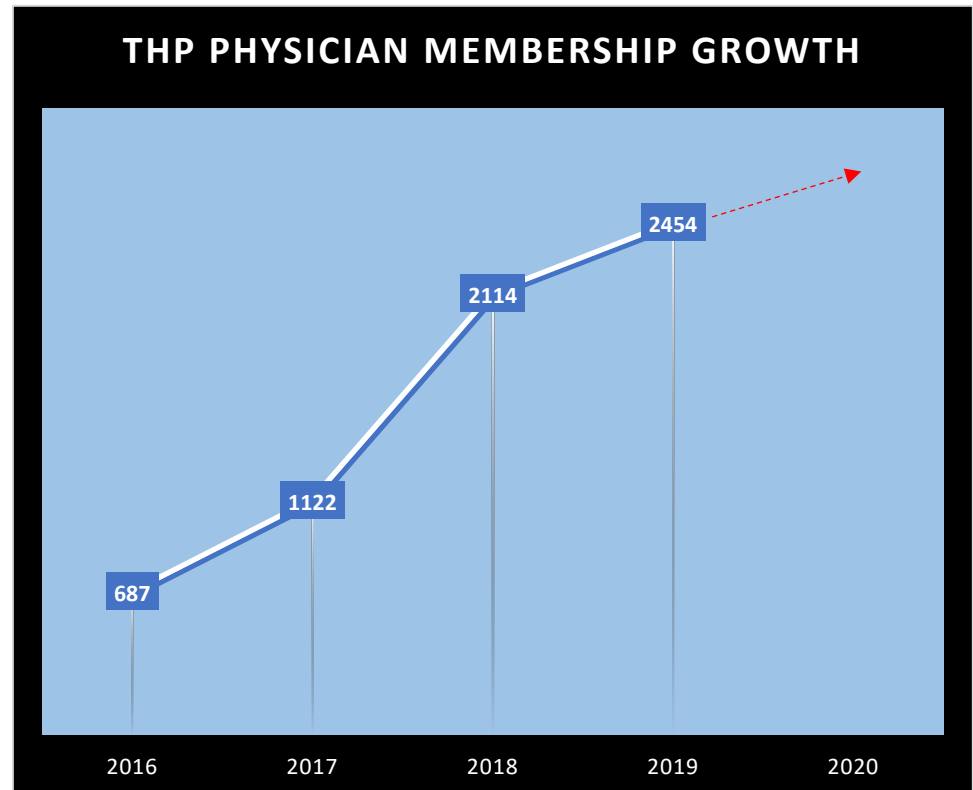
Engagement Strategies

PCP

- Coordination with and access to preferred specialists
- Financial incentives through VBC arrangements

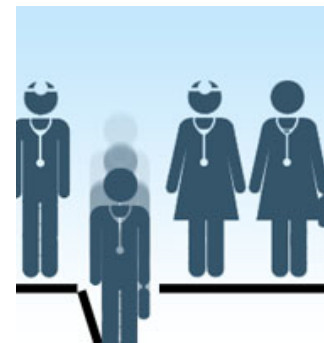
Specialist

- Increase patient volumes
- Outmigration mitigation
- Specialty Medical Home Model



THP Foundational Committees

- Clinical Informatics
- Finance & Contracting
- Population Health Management
- Provider Network, Credentialing, and Enrollment
- Quality Improvement and Clinical Integration

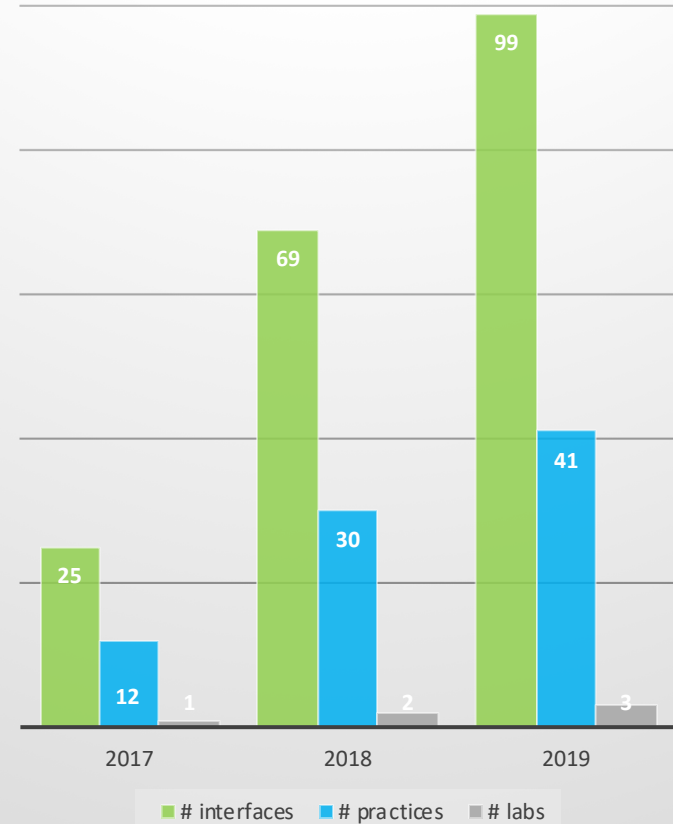


Technology Infrastructure

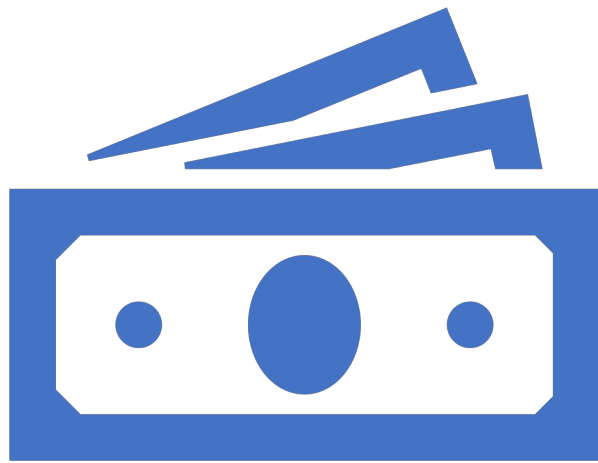
Interoperability

- Cloud-Based Data Platform
- Provider Dashboard
- Clinical Exchange HIE Connect and Portal Access

CIN Interface Progress



Value-Based Contracting and Shared Savings



- **Current for 2019**

- 2 Employer Contracts for Shared Savings and Population Health Management (Year 6)
- 1 Shared Savings Arrangement for Medical Assistance (Year 3)

- **In Negotiations**

- 2 Medical Assistance
- 2 Medicare Advantage
- 1 Commercial



Thank You



Tower Health Partners®

Advancing Health. Transforming Lives.